



Depending On Your Current
Browser Settings They May
Have To Be Modified To Allow
You To Successfully
Complete This Process

Please Follow These Simple
Instructions To Check That Your
Browser Settings Are Set As
Required



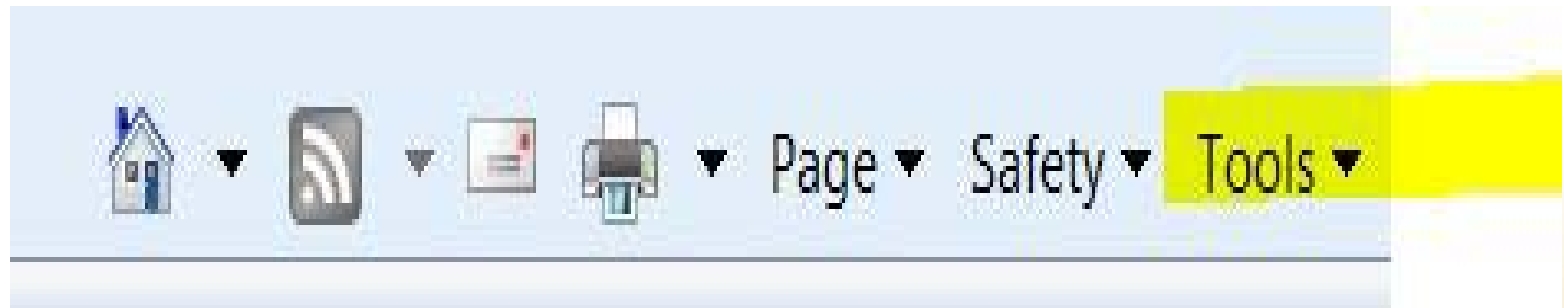
What You Have To Check And Why

- New items to open in new tabs. The default settings for a browser usually open new items in the same tab
- Allow the Brainshark system to close one module and open the next in your browser. The default settings for a browser usually do not allow this
- These modifications do not affect any security arrangements you have set



With your browser open on your screen, find your TOOLS menu and click on the little down arrow.

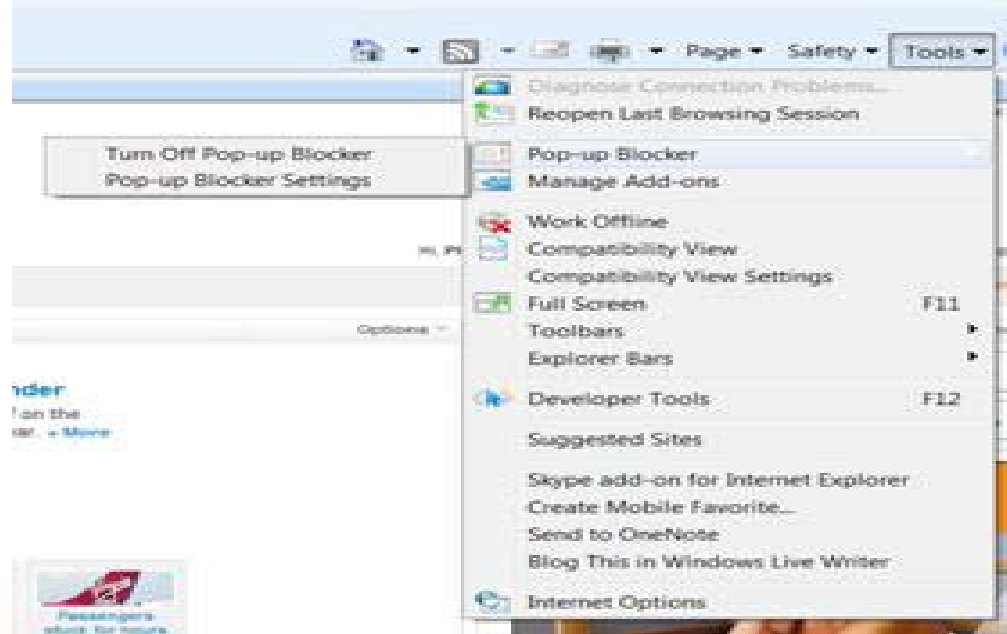
In this example we have used Microsoft Internet Explorer. Your browser may look a little different but the basic instructions are the same





On this menu window, move your cursor down and click on “Pop-up Blocker”

On the little menu window, click on “Pop-up Blocker Settings”





On the first line titled “Address of website to allow”, type the following:

<http://www.brainshark.com>

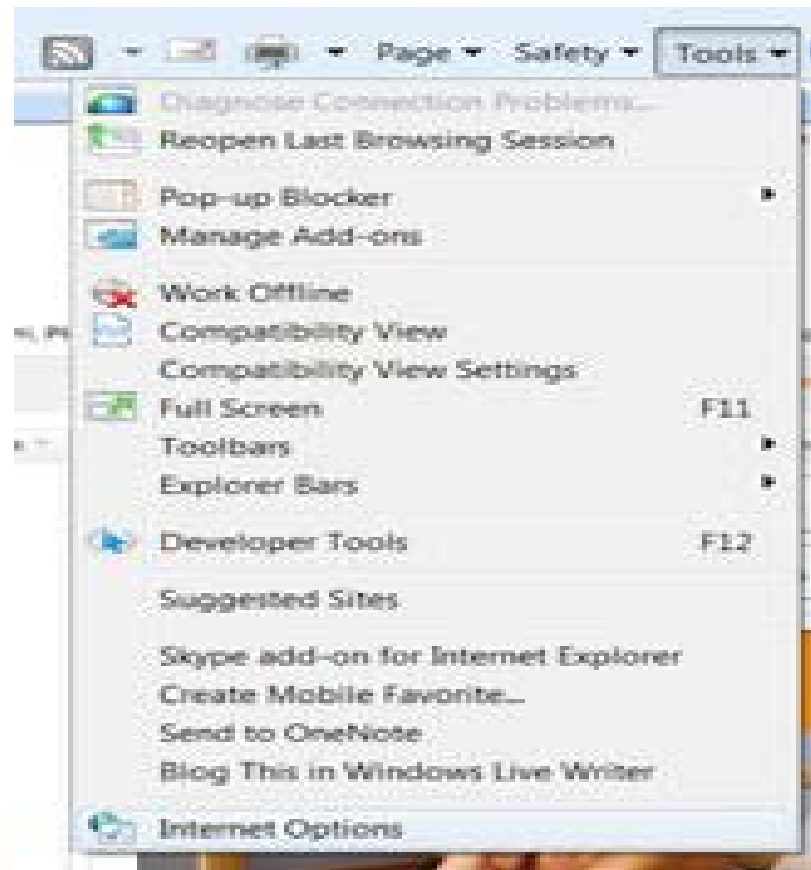
and then press the “Add” button to the right

This will allow this training site to access your browser and take you from module to module. Close this window.



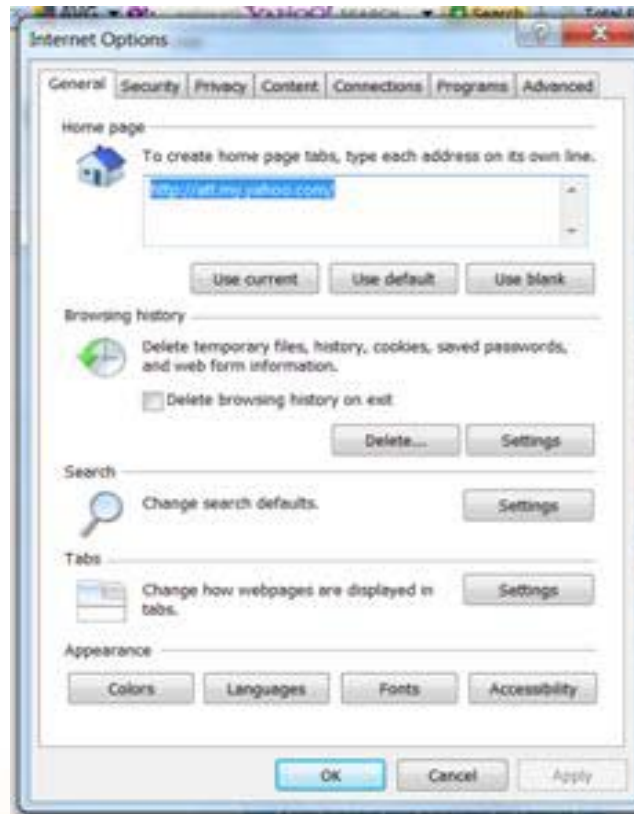


Go back to the TOOLS menu, drop down with the little arrow and choose the last choice “Internet Options”





In this menu go to the TABS section and click on “Settings”

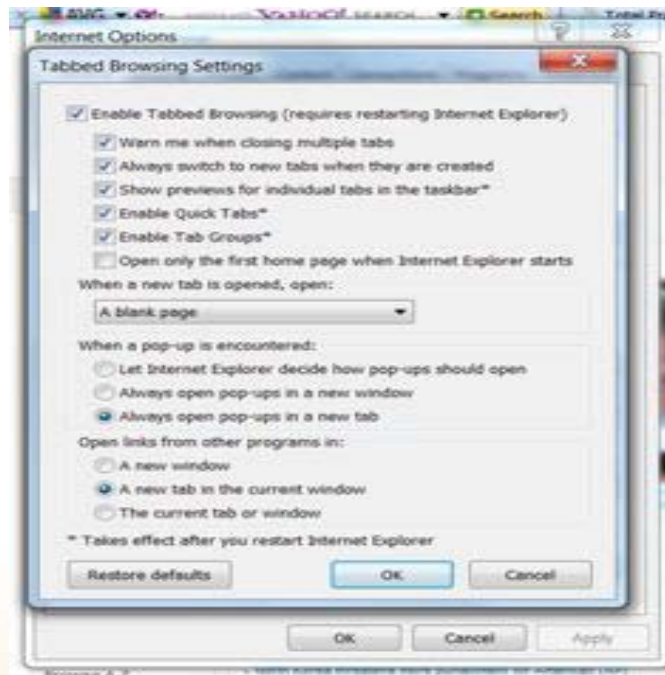




Make sure that all these settings are EXACTLY as they are shown on this picture.

IF THEY ARE NOT, MAKE THEM EXACTLY THE SAME

When you are done, close this window, on the next window click on “Apply” first and then click on “OK”.
Now close your browser and re-open it.





You only have to do this
ONCE and your browser will
be set for all your sessions
in this recertification process



You Need To Do This Every Time

- After your browser has settled in your home page, it is advisable that you click and open a new TAB
- IN THE NEW TAB go to the FSR Recert page and start your recertification process
- Your browser now will be able to stay open and automatically get you to the next module in a new tab once you close the current tab without closing itself out